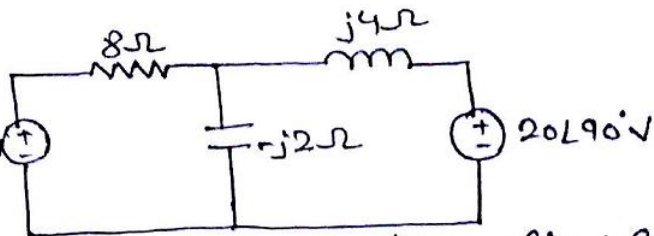


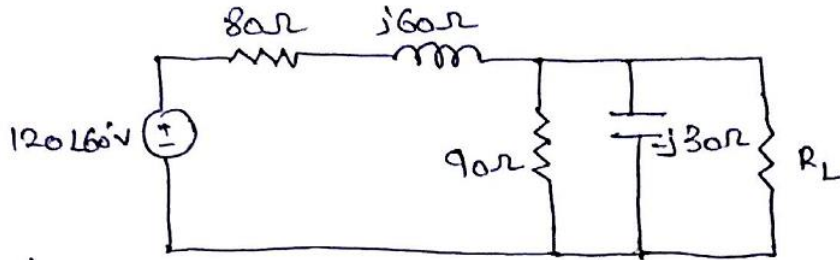
Q:-

Calculate the average power absorbed by each



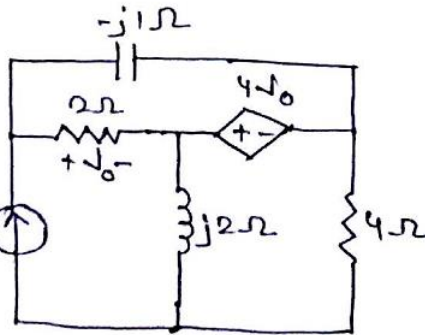
of the five elements in the circuit. (Manually + SPICE)

Q2:-



Calculate R_L and the maximum power absorbed by it, when resistor R_L is adjusted until it absorbs the maximum average power. (LTSPICE).

Q3:- Compute the average power absorbed by the 2Ω & 4Ω resistor in the circuit. (Manually)



Plot the average powers in LTSPICE -

a) For 2Ω & 4Ω

b) Sweep the values of resistors from 1 to 10Ω.

Q4:- Find the complex power absorbed in each of the elements.

Plot the complex powers in LTSPICE.

