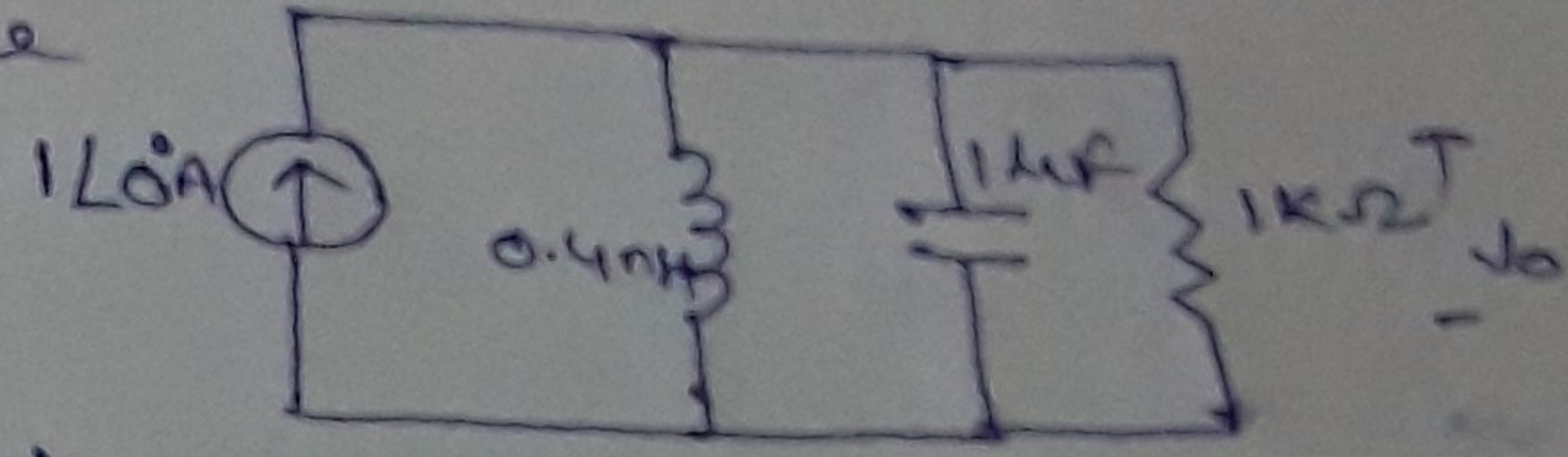
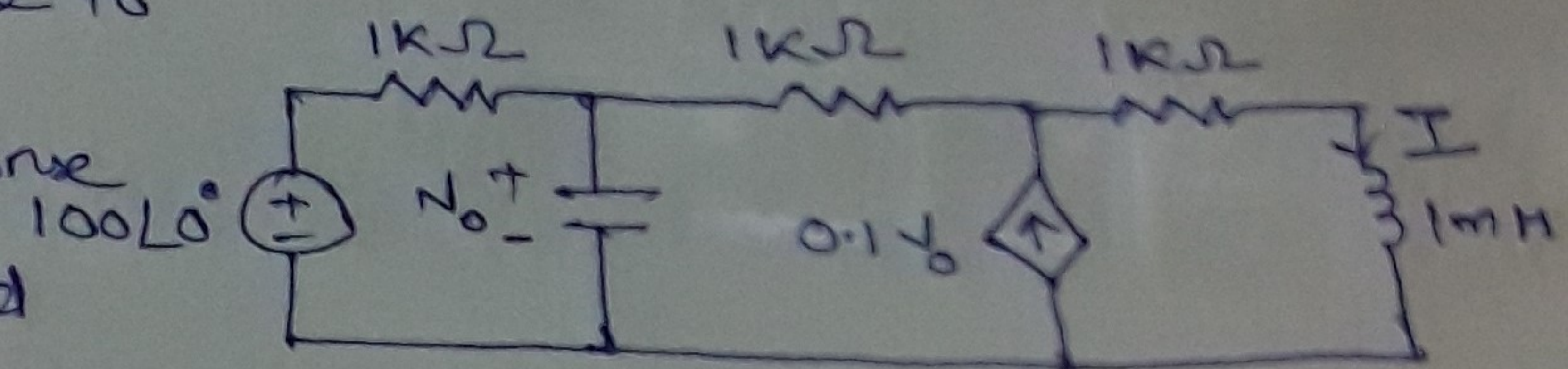


HAA#10

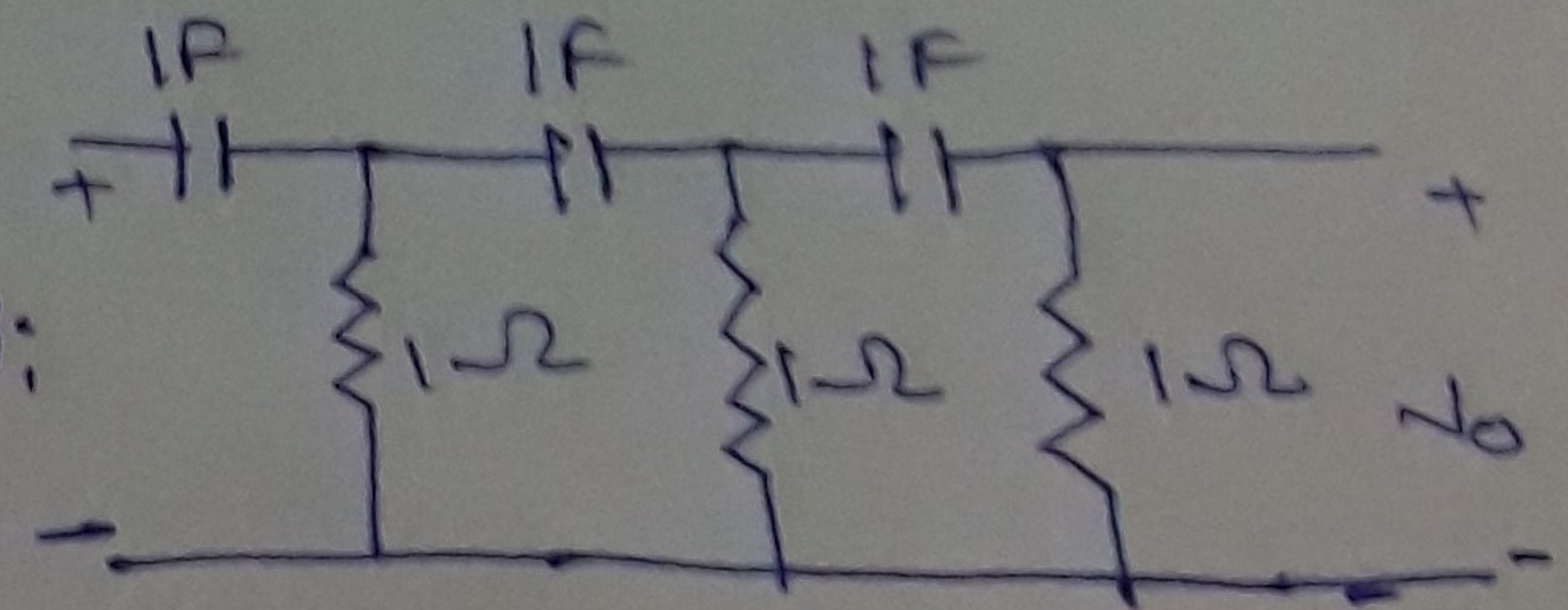
Q1:- For the network shown, use LTSpice to obtain the Bode plot for V_o over a frequency from 1 kHz to 100 kHz using 20 points per decade. Get the Transfer function manually.



Q2:- Use LTSpice to provide the frequency response (magnitude and phase I) of the circuit shown. use linear sweep of frequency from 1 to 10,000 Hz. (LTSpice)



Q3:- For the internal $0.1 < f < 100$ Hz, get the response of the network. classify this filter and obtain ω_0 . (LTSpice manual)



and obtain ω_0 . (LTSpice manual)