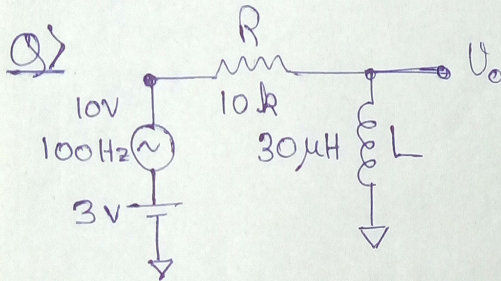
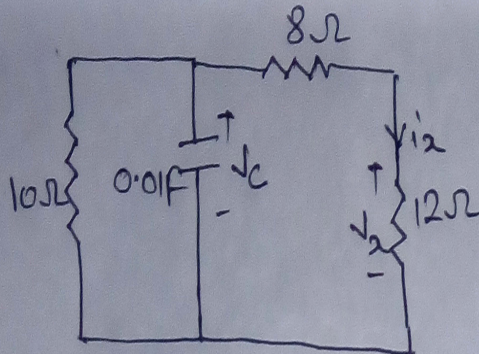


Find the output voltage at $t = 30 \text{ ms}$ in SPICE.



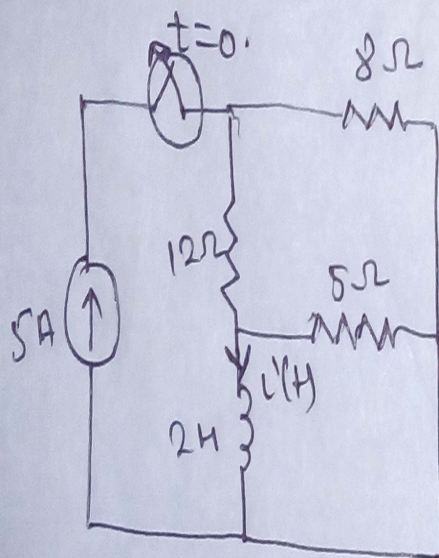
Find the output voltage at $t = 10 \text{ ms}$ in SPICE.

Q3:-



For the above circuit, let $V_c(0) = 5 \text{ V}$. Find $V_c(t)$, $i_2(t)$ & $i_2(t)$. Perform it manually and verify in SPICE.

Q4:-



The switch for the circuit has been closed for long time. It is opened at $t=0$. Find $V(t)$ for $t > 0$.